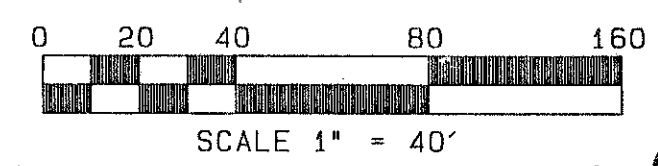


# ROYAL LAKES P.U.D.

A REPLAT OF A PORTION OF TRACTS 37, 38, 39, 40, 51, 52, 57, AND 58 OF THE SUBDIVISION OF SECTION 26, TOWNSHIP 45 SOUTH, RANGE 42 EAST, ACCORDING TO THE PLAT THEREOF, AS RECORDED IN PLAT BOOK 6, PAGE 26 OF THE PUBLIC RECORDS OF PALM BEACH COUNTY, FLORIDA.

0667-001

38



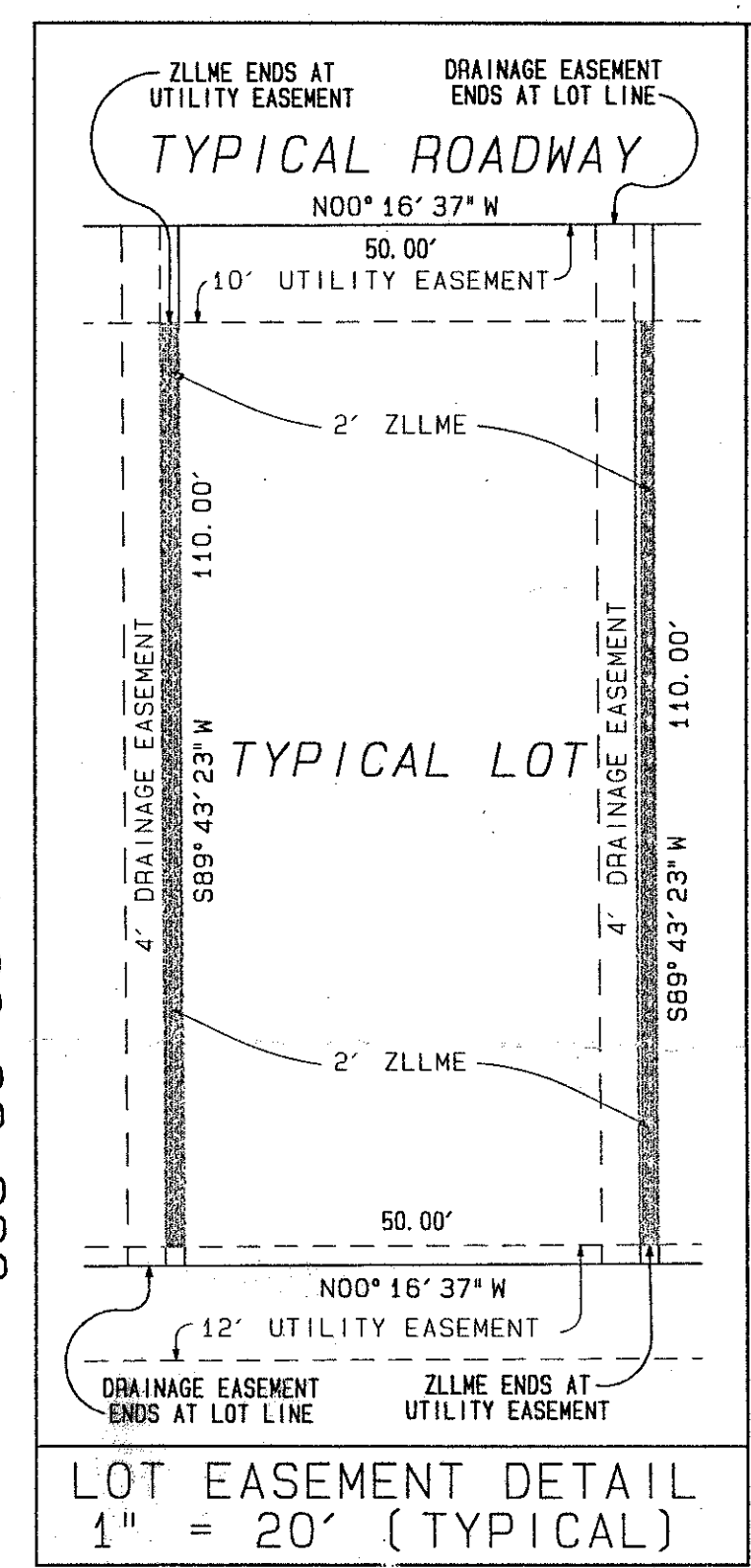
**RET. 95-71**  
**CURRENT NO SCHOOLS- RESTRICTION**  
 DOROTHY H. WILKEN, CLERK CIRCUIT COURT

MATCH LINE

SHEET 4 OF 5

JUNE 1996

SHEET 425 OF 5

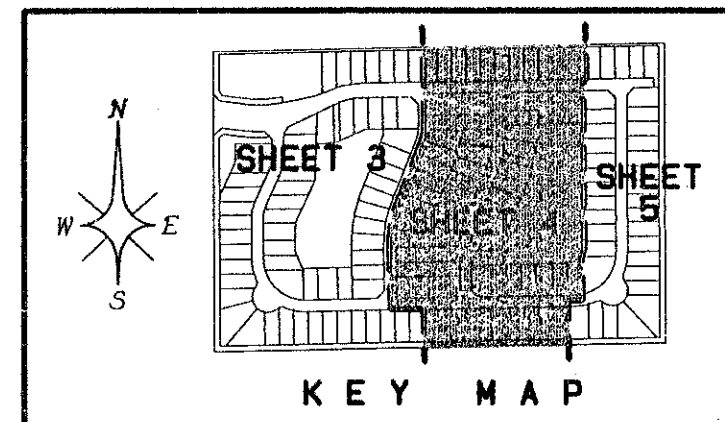


LOT EASEMENT DETAIL 1" = 20' (TYPICAL)

NORTH LINE MAJESTIC ISLES - PLAT TWO PLAT BOOK 77, PAGES 22-28

- LEGEND:
- C.A. = CENTRAL ANGLE/DELTA
  - CH. = CHORD
  - D.B. = DEED BOOK
  - D.E. = DRAINAGE EASEMENT
  - F.P. & L. = FLORIDA POWER AND LIGHT COMPANY
  - A. = ARC LENGTH
  - L.A.E. = LIMITED ACCESS EASEMENT
  - M.A.E. = LAKE MAINTENANCE ACCESS EASEMENT
  - L.W.D.D. = LAKE WORTH DRAINAGE DISTRICT
  - N.R. = NON-RADIAL
  - N.S. = NOT TO SCALE
  - O.R.B. = OFFICIAL RECORDS BOOK
  - P. = PAGE
  - P.B. = PLAT BOOK
  - P.O.B. = POINT OF BEGINNING
  - P.O.C. = POINT OF COMMENCEMENT
  - R. = RADIUS (RADI I)
  - R.F.L. = RADIAL TO FRONT LOT LINE
  - R.R.L. = RADIAL TO REAR LOT LINE
  - R.W. = RIGHT OF WAY
  - U.E. = UTILITY EASEMENT
  - W.C. = WITNESS CORNER
  - ZLLME = ZERO LOT LINE MAINTENANCE EASEMENT
  - P.C.P. = PERMANENT CONTROL POINT (PCP)
  - PCP #4380
  - P.R.M. = PERMANENT REFERENCE MONUMENT (PRM)
  - SET P.M. #4380
  - C. = CENTERLINE

\* THERE MAY BE ADDITIONAL RESTRICTIONS OF RECORD WHICH ARE NOT SHOWN ON THIS PLAT \*



SUBDIVISION \* Royal Lakes  
 BOOK 78 PAGE 3P  
 FLOOD MAP # 1918  
 ZONING PUD  
 QUAD # 35  
 ZIP CODE 33437  
 PUD NAME Royal Lakes  
 TAZ - 448

0667-001

78/38

ATLANTIC - CARIBBEAN MAPPING, INC.  
 3062 JOB ROAD - GREENACRES, FLORIDA 33467  
 (407) 964-7884 FAX (407) 964-1969